

PCE-T395 contact thermometer for measurements over an extended period, with memory, RS-232 interface and software

The PCE-T395 contact thermometer is a digital device with four input channels powered by batteries and has memory for storing up to 16,000 readings (4000 per channel). The software of the thermometer is in English and comes included in the order, making it possible to read values stored in the contact thermometer's memory. This data can be transferred to a computer allowing for analysis of temperature readings. Time intervals can be programmed for using the thermometer as a data logger ensuring that all readings get stored over an extended period of time. Another model of thermometer available is the [PCE-T390](#) which has various channels allowing for the connection of temperature sensors / type-K thermal elements but does not have an internal memory. The contact thermometer can be used as a data logger while connected to a computer. This is to say that measurements can be made in situ or the thermometer can be programmed to take measurements when the user requires. The display simultaneously shows the temperature readings of all four channels when they have four sensors connected.

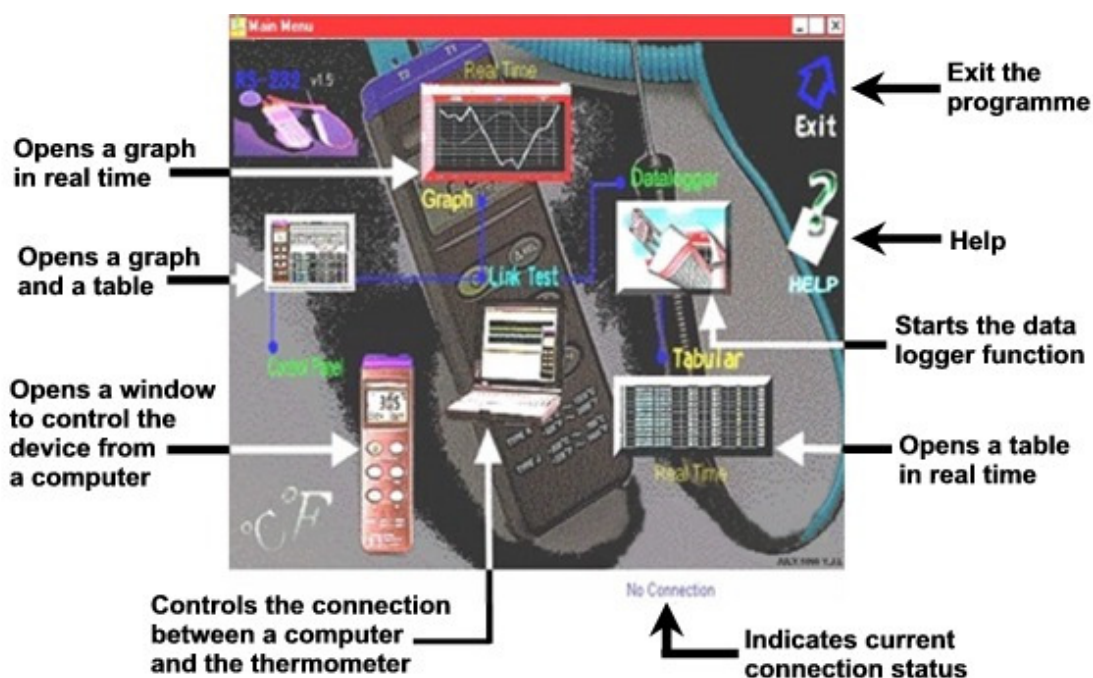
- for type-K thermal elements with small standard connectors (4 can be connected)
- with internal memory for 16,000 readings (with 4 sensors connected, 4000 values per channel)
- different [temperature sensors](#) are available for use with the thermometer and can be ordered separately
- backlit LCD with date and time
- adjustable frequency of measurement
- shows minimum, maximum and average value
- battery low indicator
- Auto shut-off function (can be disabled)
- Windows compatible software



Contact thermometer with multiple channels
PCE-T395 contact thermometer

Technical specifications	
Measurement range	-200 to 1,370 °C
Resolution	0.1 °C (-200 to 200 °C) 1 °C (200 to 1370 °C)
Accuracy at 18 to 28 °C	±0.2% of reading (-200 to 200 °C) ±0.5% (200 to 400 °C) ±0.2% (400 to 1,370 °C)
Measurement frequency	1 to 3599 sec. (adjustable)
Inputs	4 (can be adapted to 1, 2, 3 or 4 thermal elements at a time)
Memory	16,000 readings
Minimum system requirements	CD drive, Windows 95 or better, minimum 486-100 MHz, 16 MB RAM, 5MB of hard drive space to install
Sensor inputs	4 small standard inputs
Display	3.5 digit LCD with date and time
Power	9V battery, rechargeable or main adaptor
Auto shut-off	The contact thermometer shuts off after 30 minutes of inactivity. This function can be disabled.
Operating temperature	0 to 50 °C, <90% r.h.
Dimensions	184 x 64 x 30mm
Weight	250g (with batteries)
Field of used for the contact thermometer	
<p>The PCE-T395 contact thermometer can be used for taking measurements in situ and thanks to its internal memory it can take readings over an extended period of time for such applications as:</p> <ul style="list-style-type: none"> - Maintenance, diagnostics, and analyzing machines - Research and development, product development - Quality control, production and process analysis 	

Software for the PCE-T395 thermometer



Software for the PCE-T395 thermometer

The following image shows an extract from a temperature curve (diagram X - T) saved by the PCE-T395 thermometer. All the readings saved in the thermometer can be exported to programmers such as Excel. Data can be shown graphically or in spreadsheet format on the thermometer or via the software.

